



Rendering Circles

A newsletter produced by the Australian Renderers Association Inc.

NO. 22—Feb 2011

Australian Renderers Association Inc.
PO Box 390, Baulkham Hills NSW 1755

Telephone: +612 9686 3119
Facsimile: +612 9686 3303

Email: gbanks@ozemail.com.au
Web: www.ausrenderers.com.au

From the President

There were a few changes to the ARA executive at the August AGM. Craig Palmer stepped down as President and the new President is me! Many members have told me that they would have liked Craig to stay on for another term as President but **Craig's business, Australian Tallow Producers**, is expanding rapidly and he needs to direct all his energies to the business. We all appreciate **Craig's leadership of the ARA**. He did an outstanding job of maintaining relationships with AQIS and pushing market access issues. He also got Rendering Circles back on the rails and led initiatives such as sponsoring the Victam trade exhibition and conference in Bangkok and **planning the ARA's response to proposals for carbon reduction schemes**.

The other ARA Director to step down at the AGM was Dennis Wyatt. Dennis has retired from Northern Cooperative Meat Company and is withdrawing from his rendering activities. Dennis provided the essential meat company point of view to the ARA executive. To maintain this point of view, the vacancy left by Dennis has been filled by Gary King of JBS Australia. We expect that Gary will be a strong representative of the abattoir renderers and is a welcome addition to the executive.

I accepted the role of President with the intention of keeping up the contact with AQIS and getting as many favourable market access outcomes **as possible**. **The ARA's policy is to encourage importing countries to accept the Australian Standard for the Hygienic Rendering of Animal Products as the basis of import requirements for rendered products**. The market access conditions do not always work out as hoped but having all renderers comply with the Australian Standard certainly underpins market access negotiations.

The ARA has been involved in mar-



ket access negotiations over the use of rendered products in aquaculture feeds in New Zealand. This is a growing market for Australian products and the NZ MAF has redrafted its import health standard to take account of ARA comments. Market access for poultry products to Japan still has to be resolved. Following an inspection tour of Australian rendering and digest plants by a Japanese delegation, the ARA is prepared to meet with the Japanese MAFF, along with AQIS, if such a meeting can facilitate negotiations to secure access for poultry meal and digest. AQIS is also negotiating with Malaysia to improve market access conditions for Australian Product.

One of my first endeavours as President was to plan the joint ARA and New Zealand Renderers Group meeting in Christchurch. The joint meeting identified opportunities for more collaborative marketing exercises in the Asia region.

The other major event that will need a bit of planning is the Symposium scheduled for July 2010. The program is finalised and the proposed speakers have accepted invitations to take part in the symposium. We have a top venue, excellent supporting activities and a program to match. A very strong session on global influences on marketing of rendered product is planned. There is also a theme of investing in rendering to expand businesses, develop new products and markets, control costs and meet environmental obligations. The program also includes a range of presentations about what initiatives Australian ren-

derers have been taking to make their operations more efficient. Dennis King has developed a web site for the symposium. Visit it at www.arasymposium.com.au Apart from providing information about the symposium, the web site allows registrations, payments and hotel bookings to be made on line. I hope that this initiative will greatly improve the registration process compared with previous years and encourage more participation.

I would like to highlight some other points that are new to the ARA and which are covered elsewhere in this issue of Rendering Circles. After nineteen years and 25 courses, the ARA accreditation workshop is switching venues from the University of Western Sydney at Richmond to The University of Queensland at Gatton. The question is can the workshop presenters Bill Spooncer and Peter Husband cope with the change or will their combined age of 123 be too much?

Watch out for amendments to the ARA Code of Practice. Amendments in the pipeline will focus on avoiding plastic and metal contamination of rendered products.

The other point to look out for is that the ARA has completed its third benchmark survey and some of the results are presented in this issue of Rendering Circles.

Finally, let me say how sorry I am to hear that Freddy Ib has passed away. Freddy was a good friend to the ARA and participated in several Symposiums. He was one of the first and one of the best advocates for the use of meat meal in aquaculture feed. His efforts to promote the use of meat meal in aquafeeds were somewhat undermined in Europe because of BSE but Australian renderers are reaping the benefit of the pioneering work of Freddy and others.

Andy Bennett

People in Rendering



Graeme Banks OAM

This series of People in Rendering continues with Graeme Banks. The name of Graeme Banks is synonymous with rendering in Australia. Graeme has been the Executive Officer of the Association since 1975. He did not attend the first meeting convened by Brian Bartlett but took on the responsibilities of the Executive Officer shortly after and has been in the position ever since.

When Graeme first got together with the ARA he was the Federal Secretary of the Australian Meat Industry Federal Council (AMEFC). He stayed with the AMEFC (by then the Australian Meat Council) until his retirement in 1996. He has continued in the role of Executive Officer of the ARA since his retirement from the AMC.

Graeme has highlighted some of the major changes in the ARA since the Association started out in 1975. Apart from the name change from the original Australian Meat and Bone Meal Shippers and Producers Association to the current Australian Renderers Association, Graeme has overseen major changes of focus and emphasis in the Association. Initially, the priorities of the Association were to negotiate reasonable shipping rates and to have meat and bone meal dropped from being a schedule 3 commodity that could not be exported without a permit from the Department of Primary Industry. These priorities required political connections and contact with the shipping lines.

With the outbreak of BSE in the UK, and other topical rendering-**hygiene issues in the late 80's, the Association** changed its focus onto the hygiene and quality status of **Australian rendered products. With Graeme's guidance** the Association has implemented a host of initiatives to secure the reputation of Australian rendered products. These initiatives include the ARA training programs, the biennial symposium, the ARA Code of Practice for Hygienic Rendering and ARA accreditation of establishments and personnel.

The ARA's commitment to hygienic rendering has led to the ARA managing programs, in conjunction with AQIS, to list establishments as eligible to export to various countries. Graeme manages the ARA export listing programs;

a job that grows each year as more establishments take **advantage of the ARA's expanding export**-listing programs. The ARA has had very successful outcomes from its hygiene and quality initiatives. A big part of the success is due to building working relationships with DAFF and AQIS. Graeme has been, and is, central to these relationships.

Before Graeme joined the AMEFC and subsequently the ARA, he was the Manager of the National Bank of Australia (NBA) Kent St branch in Sydney. His experience in financial matters has been a great advantage to the ARA and Graeme can be relied on to keep the association in a solid financial position.

Graeme is well known for his activities outside the ARA. He is world-renowned as an orchid grower and is past-President of both the Orchid Society of NSW and the Australian Orchid Council. He is also a Fellow of the Australian Orchid Council. Currently, he is the National President of Retina Australia and President of the NSW branch. Retina Australia is a charity that supports research into **inherited retinal diseases i.e. genetic blindness. Graeme's** wife Lynette suffers from the genetic degenerative disease **retinitis pigmentosa and Graeme's involvement with Retina Australia stems from Lynette's affliction.**

That should be enough for anybody but Graeme is also President of the Parramatta division of Sydney Legacy. He also finds time for his long-term hobbies of breeding German Roller canaries and Gouldian finches.

In 2003 Graeme was awarded the Medal of the Order of Australia for service to the export meat and affiliated industries and to the study and cultivation of orchids.

These days Graeme devotes much of his time to caring for his wife Lynette who has only one degree of sight and is losing her hearing as a result of the same genetic problems that affect her eyesight. Graeme is helped in his care of Lynette by his son, twin daughters and grandchildren.

Japan Access

Officials from Japan's Ministry of Agriculture, Forestry and Fisheries (MAFF) and the Food and Agriculture Inspection Centre (FAMIC) were in Australia in December to assess the possibility of allowing Australian poultry meal, poultry digest and porcine meat meal access to the Japanese market.

The delegation visited five ARA member establishments including A.J. Bush & Sons at Riverstone and Beaudesert, Australian Tallow Producers, Baiada Proteins and Ingham Enterprises.

The auditors told DAFF that they were generally positive about the Australian system based on what they had seen at the five establishments. They emphasised the importance to Japan of segregation of poultry products from other products, particularly ruminant products, along the whole production process.

Further discussions between DAFF and the MAFF about the protocol for access of poultry meal are now required. Some of the points for discussion are: inclusion of reference to Newcastle disease and clarification of the process of validation of heat treatments. Although the protocol has been on the table for six years and DAFF has made many submissions, there was confusion about what products are included in the protocol. For example the Japanese delegates were not aware of the importance of including liquid poultry-digest in the protocol. They also indicated that fish meal would not be included and potential contamination of poultry products with fish must be avoided.

On the positive side, it looks like feather meal and poultry blood meal can be included in the protocol

The ARA has offered to meet with the Japanese MAFF along with AQIS and prospective importers and users of poultry meal in Japan to explain the various products that Australia can supply. At the moment, there is no news about whether such a meeting can be arranged. It is expected that the next move will be for AQIS and MAFF to redraft the proposed import protocol to reflect the findings of the assessment.

Accredited Plants

The latest rendering plant to be accredited by the ARA is Master Butchers at Wingfield. Master Butcher is the 75th establishment to be accredited by the ARA since the program started in 1994. Master Butchers is a long standing member of the ARA and has made significant contributions. Its accession to the ranks of accredited plants is very welcome.

FLO-DRY. PROVEN IN THE MOST DEMANDING RENDERING ENVIRONMENTS.

Flo-Dry's advanced, innovative systems minimise by-product recovery costs resulting in fast pay-back and quality output.

- 
- LOW TEMPERATURE & CONVENTIONAL MEAT & BONE RENDERING SYSTEMS
 - FISH RENDERING
 - FEATHER MEAL PROCESSING
 - BLOOD DRYING
 - HYDROLISERS
 - WASTE WATER TREATMENT
 - EVAPORATORS
 - ODOUR CONTROL BIO-FILTERS & AFTERBURNERS
 - ENERGY CONSERVATION
 - BIODIESEL



**CERTIFIED
STERILISATION**
TESTED AND APPROVED TO
INTERNATIONAL STANDARDS

FLO-DRY ENGINEERING LIMITED

10 BEATRICE TINSLEY CRESCENT,
NORTH HARBOUR INDUSTRIAL ESTATE ALBANY, AUCKLAND
NEW ZEALAND, P O BOX 33949 TAKAPUNA

LEADERS IN THE DESIGN,
MANUFACTURE AND
INSTALLATION OF BY-PRODUCT
PROCESSING SYSTEMS.

SOME RECENT PROJECTS...

NEW ZEALAND

Waikato By Products Ltd
1998 - Wastewater Treatment Plant

Auckland Farmers Freezing
Co-operative Ltd
1999 - Gelatine Separation

Nelson Bays Meat Producers Ltd
1997 - Bio-Filter

Waikato By Products Ltd
1997 - Bio-Filter

Wallace Corporation Ltd
1997 - Wastewater Treatment Plant

INDIA

Frigorifico Allana
1995-2008 (8 Plants)

GIEX
2007 - Meat & Bone LTR Rendering

AUSTRALIA

Camilleri Stockfeeds Pty Ltd - NSW
2008 - Blood Dryer

Harvey Beef - WA
2008 - Blood Dryer

Murgon Leather Pty Ltd - Qld
2007 - Fleshings Fat Plant

Tasman Group - Tas
2004 - Meat & Bone LTR Rendering

Southern Meats Pty Ltd - NSW
2001 - Blood Dryer

Stanbrake Beef Pty Ltd - Qld
2001 - Dryer

Hazeldele Chicken Farms Ltd - Vic
2000 - Blood Dryer

Oakey Abattoir Pty Ltd - Qld
1998 - Meat & Bone LTR Rendering

Mombeef Pty Ltd - NSW
1997 - Meat & Bone LTR Rendering

Rockdale Beef Pty Ltd - NSW
1992 - Meat & Bone LTR Rendering

FOR MORE

INFORMATION CALL

64 9 415 2330

or email info@flo-dry.com

www.flo-dry.com

Craig Palmer's Report



Craig stepped down as ARA president at the August AGM. One of his last duties as President was to submit the following annual report:

Welcome to all. I would like to thank everyone for attending the AGM. As most of you are aware I will not be standing for the President's position for the coming two years due to work commitments. With these commitments I am unable to give the time that the position deserves and requires. I must admit that the last two years have flown past and I have enjoyed my time as President.

During the last two years the ARA has embarked on many exciting marketing ventures including workshops in China, the Philippines and Thailand. These

workshops were held in conjunction with the New Zealand Renderers' Group, with whom the ARA continues to form closer ties. The ARA has continued to enjoy a close working relationship with AQIS and thanks to the special efforts by Laura Timmins' team we have managed to maintain access to all our overseas markets and have the exciting future prospect of gaining access to the Japanese market. Unfortunately an outbreak of foot and mouth disease in Japan has delayed this.

While the delay in gaining access to the Japanese market has been frustrating, the delay in the introduction of an emission trading scheme has been a bonus to all ARA members and the meat industry as a whole, which has already been savaged by the continual drought conditions across the country.

I would like to say thanks to all the ARA executive, Tim Juzefowicz as Vice President, Julius Rath, Dennis King, Dennis Wyatt, Kevin Pratt and Stephen Cooke. Also thanks to Bill Spooner for his technical support and a special thank you to Graeme Banks for his support.

2010 -2012 Executive

At the 2010 Annual General Meeting of the Association elections were held for all executive positions.

Elected for a two year period were the following members:

President: Andy Bennett,
Email: abennett@craigmostyn.com.au
Telephone 08 9374 9615

Vice-President: Tim Juzefowicz
Email: tim_juzefowicz@baiada.com.au
Telephone: 03 9368 5622


Committee
Kevin Pratt
Email: cam2756@wix.com.au
Telephone: 02 4566 8304

Julius Rath
Email: jrath@peerlessfoods.com.au
Telephone: 03 9214 7777

Garry King
Email: garry.king@jbsswift.com.au
Telephone: 07 3810 2229

Stephen Cooke
Email: scooke@craigmostyn.com.au
Telephone: 03 9695 4103


Dennis King
Email: dmking@sdms.com.au
Telephone 07 4661 9911



KEITH ENGINEERING (AUSTRALIA)

PROUD SPONSORS OF THE 2009 CAIRNS ARA SYMPOSIUM

- Continuous Cookers
- Screw Presses
- Hammer Mills
- Batch & Disk Cookers
- Pre-hogs
- Raw Material Systems
- Blood and Feather Cookers
- Complete Rendering Plants



36 McPherson St, BANKSMeadow
SYDNEY NSW 2036
PO Box 149 MATRAVILLE NSW 2036
Ph: 02 9316 9042
Fax: 02 9316 8717
Email: keitheng@bigpond.com
Web: www.keitheng.com

Accreditation Workshops

The ARA workshop on Hygienic Rendering of Animal Products was held at the University of Western Sydney, Richmond in July, possibly for the last time. The next workshop will be on 6-11 February 2011 at The University of Queensland at Gatton. The workshop has **been held at the University of Western Sydney's** Hawkesbury campus for the last 19 years but a change in venue was necessary because the excellent facilities at the Hawkesbury campus are no longer available.

The July 2010 workshop was the 25th and brought the number of accredited people to 677. Alasdair Bradley of Skretting did best in the exam. Simon McCoy of Blue Sky Meats, Invercargill and Grant McKinnon of Peerless Holdings also achieved outstanding results.

As usual, ARA members made valuable contributions to the workshop. Kevin Pratt and the team at Camilleri Stockfeeds hosted a visit to the plant at Maroota. Rick Carter of Kemin Australia gave a talk on Salmonella inhibitors and antioxidants and Bill Trollope of Keith Engineering gave a presentation about screw presses. Bill also sponsored the official dinner at the Richmond Club

The new venue for the workshop at The University of Queensland, Gatton will provide some excellent facilities including motel-style accommodation and modern microbiology laboratories. The highlight of the workshop will probably be the visit to the A.J Bush rendering plant at Beaudesert.



Foundation building The University of Queensland, Gatton. Venue for the February 2011 workshop



Anthony Namana, Swift Brooklyn and Dave Muir, Cargill Beef, Tamworth enjoy the visit to Camilleri Stockfeeds.



Lenard Slater, Fertal Holdings; Tim Gunther, Tegel Foods and Daniel Moore of Wallace Corp discuss findings in the microbiology laboratory.



Harry McLean, Fertal Holdings; Peter McGahan, Thos Borthwick & Sons; Kyle Crebert, E.C. Throsby; and Geoff Boundy, Sunland Enterprises team up to do microbiology experiments.



Karin Symett, Master Butchers; Grant McKinnon, Peerless Holdings; and Sabrina LeGros Teys Bros Rockhampton check results of microbiology demonstrations



Gardner Smith Pty Limited Level 13, 61 Lavender Street Milsons Point NSW 2061
 (02) 9965 5900 www.gardnersmith.com

People and Places

Keith Engineering has moved its premises from **Banksmeadow to Erskine Park in Sydney's west.**

The Banksmeadow site had been the centre of Keith Engineering operations since 1967. The new headquarters for Keith Engineering is a purpose built factory with expanded equipment capabilities including computer numerically controlled milling centre, bore mill and lathe. Bill Trollope explained that the new facilities will allow Keith Engineering to continue to provide services to rendering industry clients for another 30 years.



Keith Engineering's new premises at Erskine Park

There has been a flurry of changes of ownership of established rendering operations in 2011.

Fertal Holdings has been sold to the Craig Mostyn Group and the Fertal volume will be processed in **CMG's new state of the art rendering plant at Talloman.** Fertal was established at the Hazelmere site in 1968 and has provided rendering services to butcher shops and abattoirs since. Talloman manager Andy Bennett told Rendering Circles that the current costs of environmental compliance are such that rendering operations must expand production to remain viable. **This was one of the drivers behind Craig Mostyn's acquisition of the Fertal business.**

Dalriada Rendering at Keith SA, which has been operated by Jim Jamieson for many years, has been

bought by Master Butchers Limited. Warren Mclean of MBL said that plans for the site include continuing the processing of meat industry and chicken industry material for MBL members and upgrading the plant to process more products. Twenty staff from Dalriada have been employed by MBL.

The acquisition opens the opportunity to expand the operations of MBL to provide rendering to Victorian meat processors.

Camilleri Stockfeeds, which was established by the Camilleri Brothers in 1977 and was still partly owned by Paul and Charlie Camilleri in 2010, has been sold to Ridley Corporation. The sale is due for completion at the beginning of March. ARA Director and Managing Director of Camilleri Stockfeeds, Kevin Pratt, will continue on as Managing Director for 18 months. Bradley Hopkins is set to be the new General Manager of Camilleri Stockfeeds and Shane Pratt will be operations manager. Ridley has acquired Camilleri with plans to improve and expand the site and increase production.

Paul Martin has joined ARA stalwarts Philip Lambeth and Jonathon Doubleday at Auspac Ingredients. **Paul has over 17 years' experience in the flour milling industry.** He was head miller at Laucke Flour Mills before joining Auspac. Paul has expertise in ISO quality systems and HACCP programs. He is focussing on **Auspac's business with the rendering industry and is using his expertise to help renderers implement hygiene controls.**

Dennis Pedretti has joined the team at Australian Tallow Producers as Operations Manager. Dennis has 40 years experience in the food industry working mainly in baked goods. Before he joined ATP Dennis was Operations Manager at Patties Pies. Combined with his love of Hawthorn and the AFL, this makes him the ultimate football and pies man (Editorial note: the **pommie editor of Rendering Circles says "get a life Dennis"**). **Dennis has the brief of recreating the image of Australian Tallow Producers through staff training, food safety awareness and increased focus on OH&S.** Dennis is a man of the land and lives on his property at Seymour where he breeds cattle.

New Plant for Talloman

Major upgrades at Craig Mostyn's Talloman plant have been commissioned. They include a retro-fit of the poultry line and a complete production line for mammalian material.

Changes to the poultry line include a pre-heater and waste-heat evaporator to concentrate the water/oil mix from the pre-heater. Material from the pre-heater is separated through a rotary screen. The solids are dried through the existing high-temperature rendering vessel and the oil/water mixture is concentrated in the WHE. The oil and concentrate is added back to the existing high-temperature rendering vessel with the dewatered solids.

The throughput of the retrofitted plant is 13 tonnes of raw material per hour when operating three presses. The gas bill has been cut by 35% and product quality has improved due to faster throughput.

Talloman has used equacookers to process red meat material since 1976. Three equacookers have been refurbished and re-shafted over the years. After extensive research Talloman decided to replace the high-temperature equacooker system with a Rendertech press-dewatering system. Press-dewatering was chosen because of the lower energy use and low fat content of meal observed at other establishments that use the press-dewatering system.

It was also expected that this style of rendering would have environmental advantages. In particular the condensate from evaporation of stick-water is much cleaner than condensate from high-temperature rendering vapours.

There is no priming to contaminate vapour and condensate and the BOD of condensate from evaporation of the stick water is about 900 mg/kg.

Before the press-dewatering system was installed, Talloman was sending 36 tonnes of sludge from the effluent decanter off-site each week. The new plant with cleaner condensate, along with other tidying up and putting polisher wash-water into the cooker, re-

duced the amount of sludge to 15-17 tonnes per week. Apart from reducing the amount of sludge sent off-site, this should add to product yield. It is expected that improved control of the meal moisture content combined with reduced losses in condensate and effluent sludge will result in an extra 700 tonnes of meat meal per year.

The combined effect of the retrofit to the poultry plant and the new red-meat plant is expected to reduce gas use by about 35%. Talloman manager Andy Bennett said that gas costs have gone up by 62% but with the savings in gas use due to the new equipment, Talloman expects to reduce its gas bill by \$1,000,000 per year.



Andy Bennett conducts maintenance on the new evaporators



Twin screw press and decanter being installed at Talloman

ARA Meeting Dates

The next meeting of the ARA will be held on Wednesday March 2nd in Adelaide. Committee meetings will be held the day prior on March 1st. The venue is the Stamford Plaza on North Terrace.

The following meeting will be held in Melbourne in May at a date and venue to be confirmed.

The Annual General Meeting of the Association will be held on July 27th prior to the Symposium at the Sydney Convention and Exhibition Centre.



PROVEN COMMITMENT TO THE RENDERING INDUSTRY

Salmonella control
with **Sal CURB®** for:
**plant hygiene &
meal decontamination**

Oxidation control
in fats, oils & meals with:
**Rendox™
Termox™ & Naturox®**

Call to obtain a copy of the 'Rendering Plant Salmonella Control Programme' booklet

Kemin (Aust.) Pty. Ltd. Tel: 02-94822357 & Fax: 02-94821837

®™ Trademarks of Kemin Industries, Inc., U.S.A.

Benchmarking summary

The 2010 ARA Benchmarking survey has shown reductions in energy and water use at ARA plants that responded to the benchmarking survey.

The ARA conducted surveys of members to establish benchmarks for energy and water use in 2008, 2009 and 2010. The details of these surveys have been made available to the ARA members who responded to the survey and a summary of results is shown below.

In order to compare energy and water use between

plants data submitted to the ARA was on the basis of units per tonne of water removed. Water removed is the difference between the total weight of raw material intake and the total weight of products.

In addition to the data on energy and water use provided by ARA members, the results include estimates of carbon dioxide equivalent emissions based on gas use, energy consumption and water used. These estimates have been made with advice from Dr Stewart McGlashan.

Mean energy and water use at rendering plants

| | Mean benchmark for financial year | | |
|---|-----------------------------------|-----------|-----------|
| | 2007-2008 | 2008-2009 | 2009-2010 |
| Gas (GJ per tonne water removed) | 4.60 | 4.40 | 4.34 |
| Electricity (kWh per tonne water removed) | 101.5 | 112.5 | 102.1 |
| Water use (kl per tonne water removed) | 2.35 | 3.32 | 1.63 |
| Waste water (kl per tonne water removed) | 1.71 | 2.42 | 1.63 |
| CO ₂ emissions (tonnes per tonne of water removed) | 0.648 | 0.518 | 0.477 |

In the 2009-2010 survey, contributors also submitted data on energy and water use per tonne of raw material. Energy and water use per tonne of raw material processed are not good bases for comparison because the amount of water in raw material has a large effect on the energy use. However the average benchmarks per tonne of raw material were: energy use 2.7GJ; electricity use 60.6kWh; water use 0.96kl and waste water 1kl.

Record Prices for Tallow

Tallow prices have soared to record levels at the start of 2011 as a result of the weak US dollar (parity with the A\$), the movement of cash away from financial markets and into commodities and a developing world hungry for protein and food related commodities. The struggle for acreage in the USA between corn for ethanol and soybeans for protein will place continued importance on weather as we enter the Northern Hemisphere growing season. Fires in Russia, floods (and droughts) in Australia, heavy rains in Peninsula Malaysia and drought in Argentina have caused supply reductions and subsequently record high prices for oilseeds, vegetable oils and tallow. Mandates for biofuels in North and South America have strengthened the link between fats and oils and the price of crude oil.

Palm stearine, a direct competitor for tallow, is at record prices largely because of reduced fractionation at origin as well as lower than forecast 2010-ending stocks. In 2010 palm stearine prices moved from US\$725 per tonne FOB Malaysia to US\$1,220. Buyers in the Far East have turned to tallow for a considerable part of their raw material requirements and this, together with the factors mentioned above, has 1% FFA tallow trading around \$1,200 per tonne in February 2011. As a result of the record prices, world consumers of fats and oils have been reluctant to stock pile and continue to buy only for the nearby.

Conditions in Australia are not helping with low kills in December and January due to flooding and seasonal plant closures resulting in weak production of tallow. Cyclones notwithstanding, it is expected that tallow production in Queensland should start to build sometime during March-April 2011 as the state dries out. However Australian domestic issues will ultimately defer to and become secondary in influence to global oilseed and vegetable oil supply and demand factors.

Meat Meal Takes Off

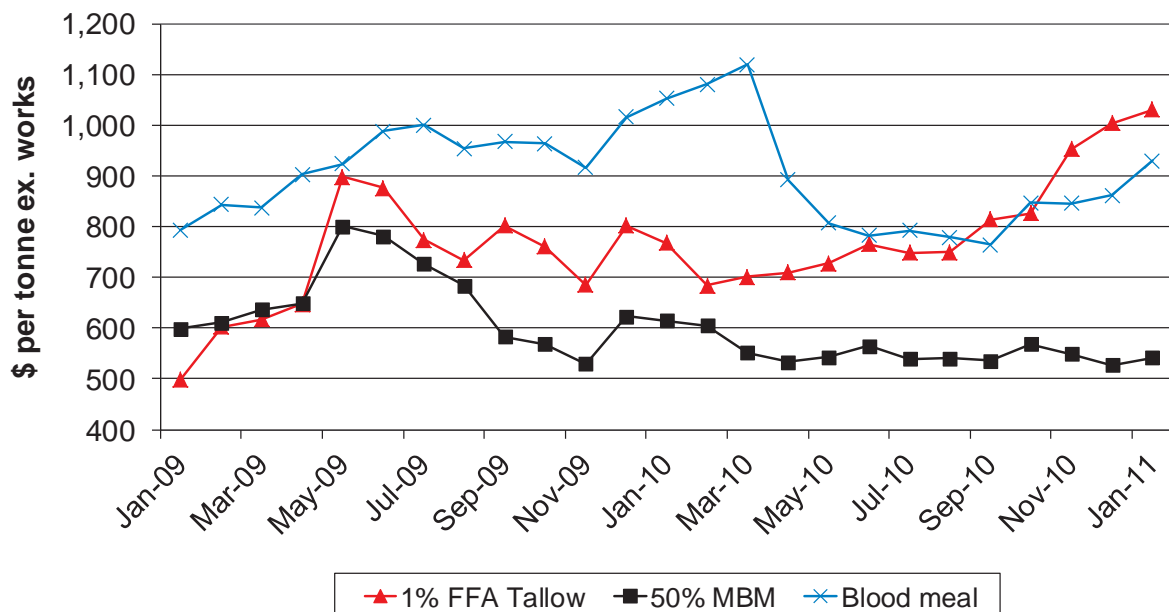
Meat meal prices were remarkably stable in 2010 with monthly average prices moving in a band from \$530 to \$560 per tonne since March 2010. After China stopped buying in the middle of 2010, export prices were limited as increased volumes of US product became available in Indonesia. Prices of Australian meat meal were maintained by domestic demand.

The New Year started out with low cattle kills and very weak production of meat meal. Soy meal prices are firmer and domestic feed mills are looking for meat meal. Meat meal prices are up by as much as \$100 per tonne depending on local domestic demand and production. In February, prices were strong in Victoria at up to \$650 per tonne delivered. The NSW price was a little lower at about \$630 per tonne and the Brisbane price was about \$580 per tonne.

Export prices were also looking up. Fishing in South American waters has been suspended and is not due to resume until May. Consequently, fish meal prices have taken off. Fish meal has increased by \$400 to \$500 per tonne and China is buying meat meal as it did in early 2010 when fish meal prices were high. In addition, domestic prices for meat meal in the USA are higher and the US cattle kill is starting to slow down. This has relieved some of the pressure from US competition in the Indonesian market. Export price are about \$500 to 540 per tonne DCT for 50% protein meal, depending on the destination.

The February prices of meat meal may be temporary and the domestic price could fall back as production starts to build. However, export prices should be firm for a while after some disappointing months.

Tallow, meat meal and blood meal prices 2009 and 2010



ARA 11th International Symposium Gold Sponsors

The Australian Renderers Association wishes to sincerely thank the following companies who at the time of going to print had committed their support of the 11th International Symposium as Gold Sponsors.

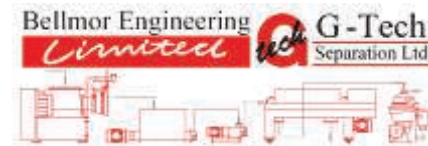


ARA 11th International Symposium Sponsors

The Australian Renderers Association wishes to sincerely thank the following companies who at the time of going to print had committed their support of the 11th International Symposium as Sponsors.



Unity Scientific
Asia Pacific



AQIS Rules!

AQIS has a number of market access negotiations on the boil. In addition, AQIS is in the middle of verifying the ARA programs for listing rendering plants for export to various countries. The current verification audits are being conducted by senior AQIS staff from the operations branch. There will be witnessed audits of **all the ARA nominated auditors and the ARA's management** procedures administered by Graeme Banks have been verified by Steve Tidswell. Later in the year AQIS expects an EU review of the procedures for certifying exports of animal by-products. The current round of verifications of the ARA programs should help AQIS and industry prepare for the EU review.

Market access negotiations with Biosecurity New Zealand have been completed successfully. Previously, a restricted range of rendered products could be used in aquaculture feeds exported to New Zealand. Some dispensations were introduced into export permits to expand the range of ingredients used in aquaculture feeds. Now the New Zealand Import Health Standard for fish food has been amended to permit the use of most rendered products in aquaculture feeds. Furthermore, Biosecurity NZ has accepted that products

produced in accordance with the requirements of the Australian Standard for Rendering can be used in aquaculture feeds. Unfortunately the Import Health Standard does not include rendered products that contain pork. This is because porcine material was not considered in the risk assessment that led to the revised Import Health Standard. However, exporters of aquaculture feeds can obtain import permits that allow for the use rendered products that contain pork in aquaculture feeds.

AQIS is involved in discussions about market access with Malaysia, Japan and Argentina. It is hoped that Malaysia will accept product produced according to the Australian Standard for Rendering. In this case it is likely that the ARA could recommend listing for access to this market. Discussions with Japan about access for poultry and porcine products are progressing and are reported separately in Rendering Circles. Discussions with Argentina about access for tallow have stalled with Argentine authorities insisting that tallow must be sourced from beef material only and from animals that have passed ante- and post-mortem inspection.



G-TECH SEPARATION PTY LIMITED
 14A NICHOLAS DRIVE,
 DANDENONG VIC. 3175

Ph 03 9768 3866
 Fax 03 9768 3711
 Email: salesgtech@bigpond.com
 Email: sales@gtech-bellmor.co.nz
 Web: www.gtech-bellmor.co.nz



MANUFACTURERS OF CENTRIFUGES, PUMPS, GRINDERS AND MIXERS.
 PARTS & SERVICE FOR THE RENDERING INDUSTRY

Member of ARA



Head Office:
 21 Empire Road, Belfast, Christchurch, NEW ZEALAND Ph: +64 3 323 6151 Fax: +64 3 323 6152

ARA 11th International Symposium

The ARA organizing committee's plans for the ARA's eleventh symposium at the Sydney Convention and Exhibition Centre are well advanced. Registrations and hotel bookings can be made through the website www.arasymposium.com.au. The website includes details of the program and information on the speakers.



The symposium has been planned with something for everyone. The program looks at global influences on markets for rendered products with talks from leading experts on tallow and meat meal markets. The keynote speaker is Dorab Mistry, one of the most influential players in global fats and oils markets. The program also highlights rendering and meat production in South America. Global trends that impact on rendered products, such as moves to renewable fuels, will also be discussed.

The theme for local consideration is investment in rendering and speakers from Australia and Canada will

examine investment strategies for expanding businesses, maintaining quality and dealing with environmental and energy costs. There is a line up of speakers who will discuss the impact of some of the latest developments at Australian rendering plants. Environmental issues including biogas production and making the most of waste heat will also be discussed.

The business program is the most ambitious to date and so is the social program. There will be an evening harbour cruise on the magnificent Sydney Harbour and the symposium dinner will be at one of Sydney's leading water-side specialist function-dining centres.

Visit the web site www.arasymposium.com.au to find all the news about the symposium and make your bookings. An added attraction is that the Sydney boat show will be at Darling Harbour at the same time as the symposium - so get in early with registrations and accommodation bookings.